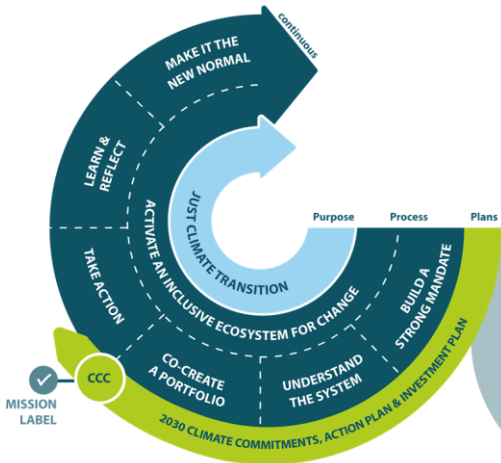


# Local Green Deals (LGD) and Climate City Contracts (CCC)



Cities Mission Climate City Contract

- Step 1A: Building the case
- Step 2A: Mobilising existing staff (steering team)
- Step 3A: Reviewing existing strategic framework
- Step 4A: Mobilising local stakeholders around immediate opportunities
- Step 5A: Assessing legal and fiscal conditions
- Step 6A: Implementing deals
- Step 7A: Monitoring and promotion

- BUILD ON WHAT IS ALREADY THERE
- THINK BIG
- LEAD BY EXAMPLE AND SHOW COMMITMENT
- MULTILEVEL (VERTICAL) GOVERNANCE PROCESSES
- AN INTEGRATED APPROACH (HORIZONTAL COORDINATION)
- A COLLABORATIVE APPROACH
- ACTION-ORIENTATED AND HIGH-IMPACT APPROACH
- INVESTMENT IN THE SUSTAINABILITY TRANSFORMATION**
- CREATE TECHNOLOGICAL TRANSFORMATION
- ENSURE RESILIENCE

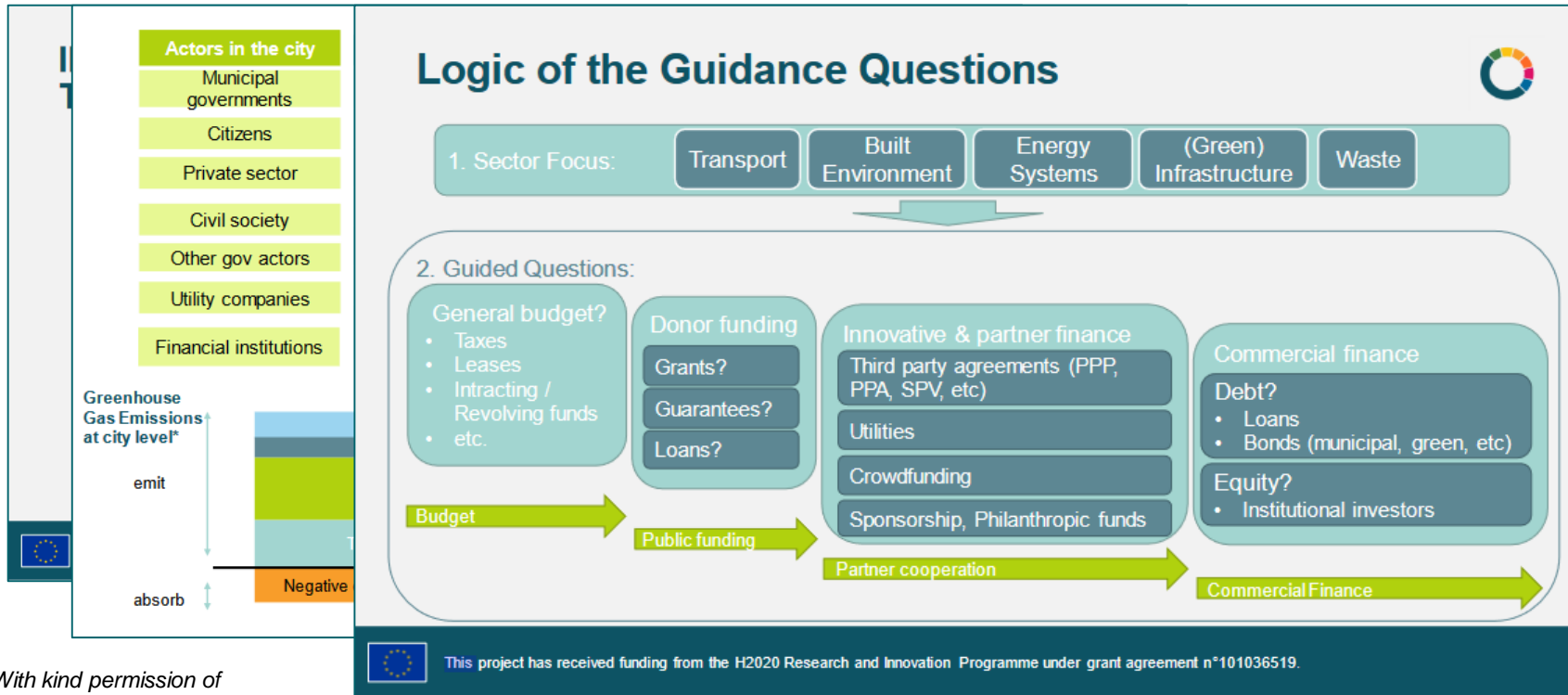
# Financing LGDs/CCCs

## Investments (LGD)

- Ensure that public funds encourage further private and civic sector actors investment
- Mix of financial mechanisms to stimulate the development of the local social/sustainable economy  
= combination of direct economic incentives (grants, loans) + fiscal measures (tax, subsidies) + co-investment (public-private partnerships)
- Cities needs support from EU and national level to build capacity (staff and skills) especially in the preparatory phase of the LGD process  
→ Potentially, advisory sources from development banks such as EIB (e.g. JASPERS, URBIS, ELENA) could support cities and LGDs be used for eligibility

# Financing LGDs/CCCs

Investment Plan (CCC) → support tool:



# EIB (European funding opportunities)

- JASPERS, ELENA, Circular Cities Facility,
  - LGDs can help in due diligence process for funding applications + Taxonomy-alignment makes it easier
  - LGD assures integrated sustainable approach, which is a key for EIB and other funders
  - Grouping cities as consortia for support programmes can facilitate uptake of cities
- National funding is a big resource + EU/national recovery plans often address cities (cities reported that having a LGD benefitted them to be eligible)
- Big part of emissions is coming from private households, utility companies, business
  - use city's planning control to incentivize private sector to co-finance the targets and circulate the funding back in multiple uses (revolving funds)

# Thank you!

For further questions:



**Niklas Mischkowski**

Officer

Governance and Social Innovation

[niklas.mischkowski@iclei.org](mailto:niklas.mischkowski@iclei.org)

